

# ArtfulBits Parent Selector Column

*for Microsoft® SharePoint®*

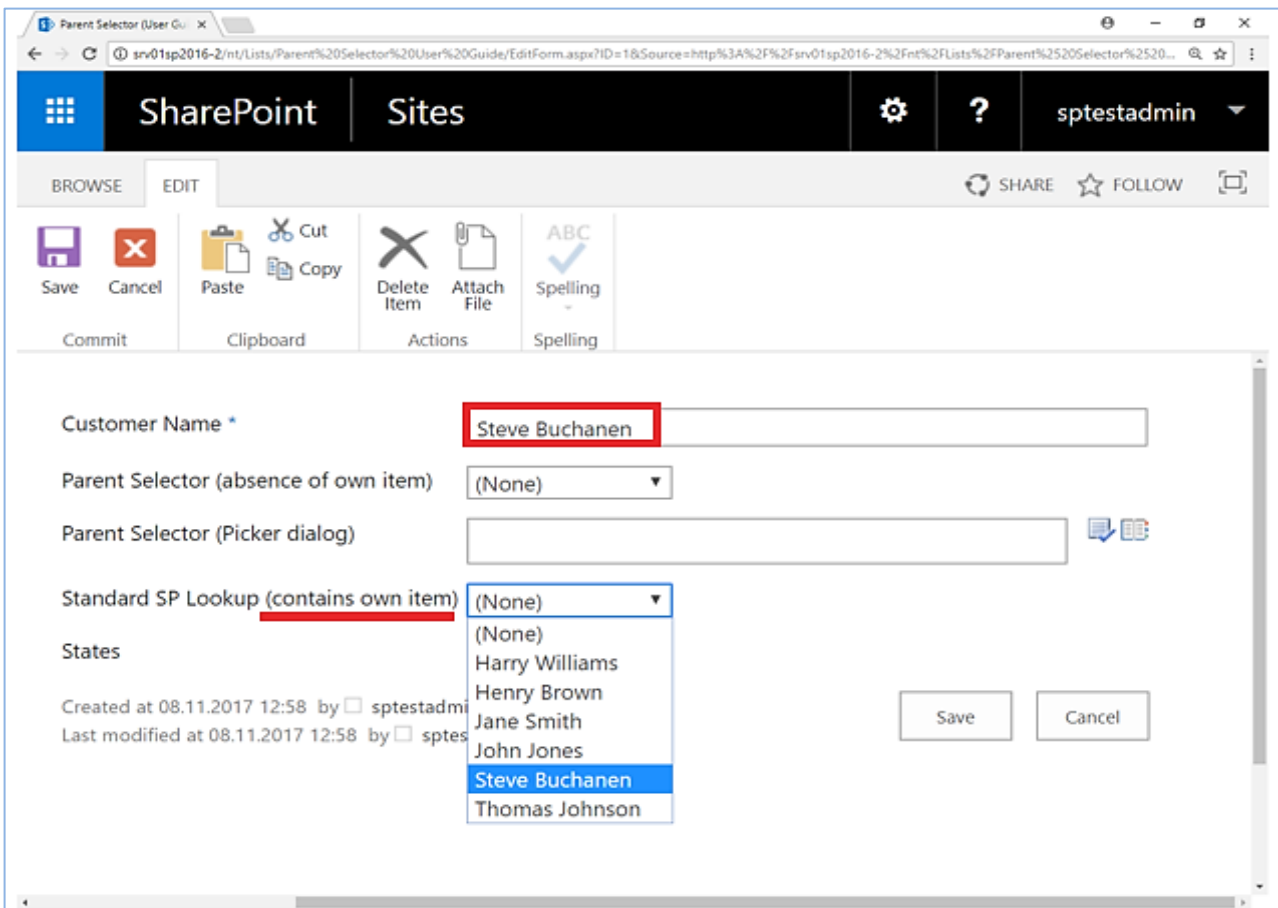
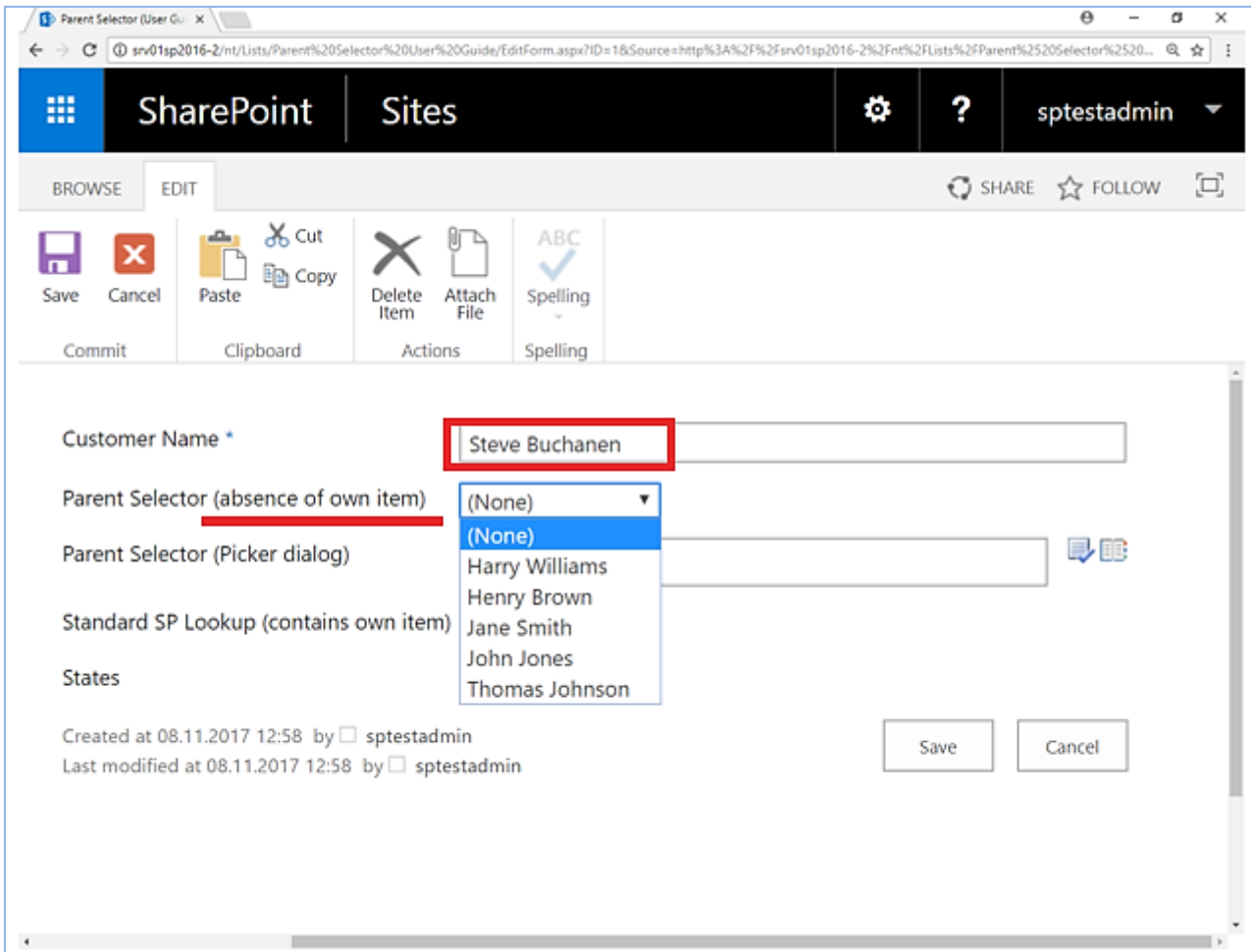


## User Guide

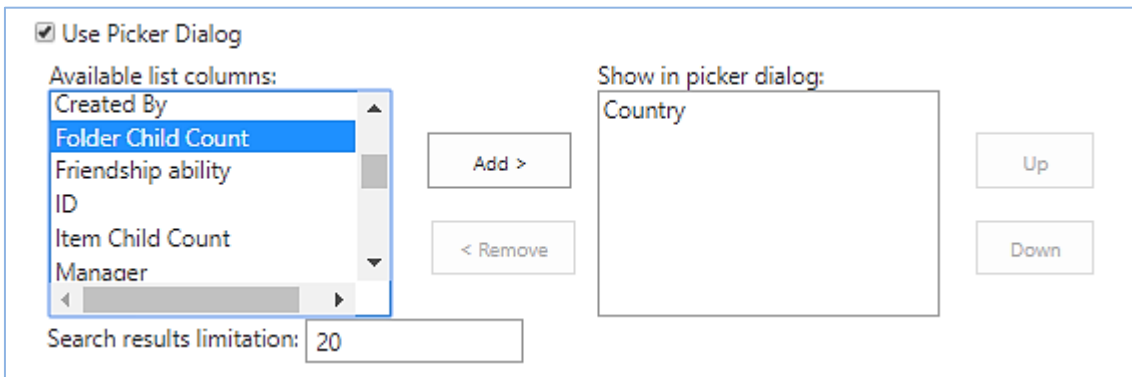
Overview .....	1
Feature List.....	3
Why ArtfulBits Parent Selector Column? .....	3
ArtfulBits Lookups and standard SharePoint Lookup columns feature comparison .....	4
How to Use.....	4
Conversion .....	6
Release Notes.....	6
See Also .....	9
Remarks .....	11

### Overview

Parent Selector Column is intended to lookup to self (containing list) in order to display hierarchical data. Main difference with standard SharePoint Lookup is absence of own item (standard SharePoint Lookup contains own item).



Users can also use the picker dialog to choose data from large lists.



## Feature List

Feature	SharePoint 2010	SharePoint 2013	SharePoint 2016
Exclude own item from lookup list	✓	✓	✓
Supported lookup data from subfolders	✓	✓	✓
Powerful function of searching inside lookup list. Using a Picker Dialog for searching items in lookup lists	✓	✓	✓
Filtering retrieved data using existing list views	✓	✓	✓
Single and multiple lookup for standard mode and using Picker Dialog	✓	✓	✓
Supported default values	✓	✓	✓
Supported Datasheet view	✓	✓	✓
Conversion between "ArtfulBits Parent Selector" column and standard SharePoint "Lookup" column	✓	✓	✓
Validating Hierarchical Integrity (checking whether hierarchical data is non-cyclic)	✓	✓	✓
Language pack support (desired localization could be added by request)	✓	✓	✓

## Why ArtfulBits Parent Selector Column?

If you have hierarchical data in a list and you need to lookup data in own list (containing list), using **ArtfulBits Parent Selector** column is the best choice.

## ArtfulBits Lookups and standard SharePoint Lookup columns feature comparison

Featu	SharePoint Lookup	Parent Selector	Cross-Site Lookup	Cascaded Lookup
Lookup data from lists cross-site within site collection			✓	✓
Lookup data from lists on the same site	✓		✓	✓
Lookup data from the same list	✓	✓	✓	✓
Single and multiple lookup	✓	✓	✓	✓
Parent-child relationships				✓
Support lookup data from subfolders		✓	✓	✓
Picker Dialog for searching items in lookup lists		✓	✓	
Filtering retrieved data using existing list views		✓	✓	✓
Supported default values		✓	✓	✓
Adding items to source list via new item form on the fly			✓	✓
Adding items to source list via inline entering on the fly			✓	
Excluding own item from lookup list during item editing		✓		
Checking whether hierarchical data is non-cyclic		✓		
Conversion among "ArtfulBits Cascaded Lookup", "ArtfulBits Cross-Site Lookup", "ArtfulBits Parent Selector" columns and standard SharePoint "Lookup" column		✓	✓	✓

### How to Use

To use Parent Selector column you must select appropriate option in the list of available columns at the Create Column page. In the Parent Selector Special Settings section you can change default settings in order to adjust column mode to your needs. Parent Selector column supports such target column types: Single Line of Text, Number, Date and Time, Calculated (output is single line of text), Counter type (ID field).

## Create Column ✕

**Parent Selector Special Settings**  
Specify special Parent Selector options.

Display the following column:

Allow multiple values  
 Validate Hierarchical Integrity (do not allow cyclic recurrence)  
 Use Picker Dialog  
 Use filter by list view

Default value:

Add a column to show each of these additional fields:

- Created
- ID
- Modified
- Number
- Number (linked to item)
- Version

You can select lookup information from the appropriate drop-down list. You can also use picker dialog in the Parent Selector. It is needed to set corresponding check box to true. The following settings (above) will be displayed.

Available columns are shown in the first list. You can select the values, which will be present in the picker dialog. It is useful, that you can select "Allow multiple value" to choose more than one item from the list of options.

**Parent Selector Special Settings**  
Specify special Parent Selector options.

Display the following column:

Allow multiple values  
 Validate Hierarchical Integrity (do not allow cyclic recurrence)  
 Use Picker Dialog

Available list columns:

- Created By
- Folder Child Count
- ID
- Item Child Count
- Manager

Show in picker dialog:

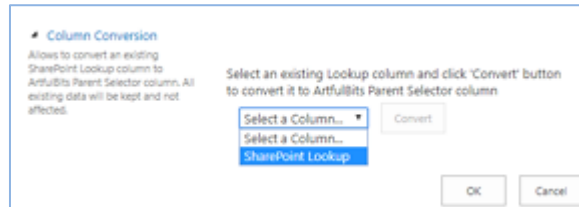
Search results limitation:

Use filter by list view

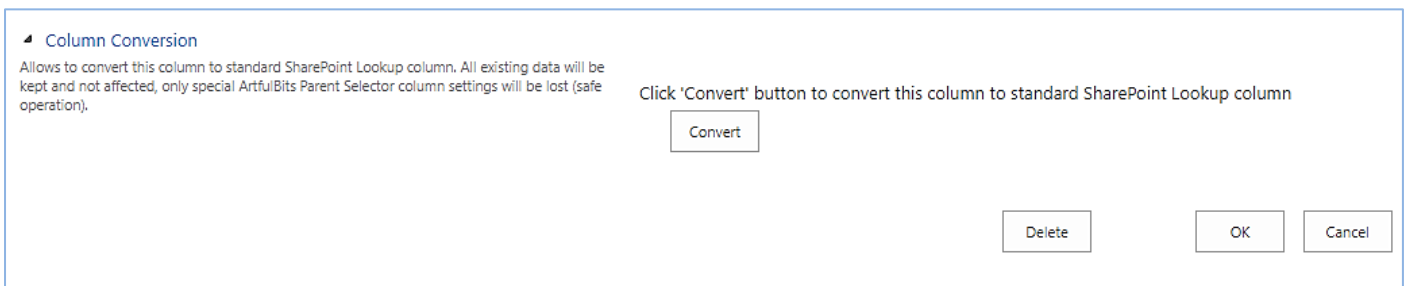
Default value:

## Conversion

You can easily convert existing standard Lookup column to "ArtfulBits Parent Selector" column and use data filtering, picker dialog, and other features. Firstly, you should create SharePoint Lookup column with items you need. The next step is creating new column and choosing "ArtfulBits Parent Selector" type. Select an existing Lookup column (from drop-down list) in Column Conversion section and click 'Convert' button to convert it to ArtfulBits Parent Selector column.



Conversion of ArtfulBits Parent Selector to standard Lookup allows editing content in Datasheet view. You should choose ArtfulBits Parent Selector column in List Settings Page and click "Convert" button (in Column Conversion section) to convert current column to standard SharePoint Lookup.



## Release Notes

Version

Notes

v2.22 (June 15, 2017)	<b>Bugs Fixed:</b> <ul style="list-style-type: none"> <li>• Correct display of different column values' types</li> <li>• Document library with lookup column error is fixed</li> <li>• Lookup column default value can be provided now</li> </ul>
v2.21 (May 15, 2016)	<b>Improvements:</b> <ul style="list-style-type: none"> <li>• Default value changed from textbox to drop down</li> </ul> <b>Bugs Fixed:</b> <ul style="list-style-type: none"> <li>• Fixed minor issues</li> </ul>
v2.1 (April 1, 2016)	<b>New Features:</b> <ul style="list-style-type: none"> <li>• Added SharePoint 2016 support</li> </ul>
v2.0 (April 29, 2013)	<b>New Features:</b> <ul style="list-style-type: none"> <li>• Added SharePoint 2013 support</li> <li>• Added possibility of setting maximum item count for picker dialog search.</li> <li>• Added Russian and German localization</li> </ul>
v1.71 (December 2, 2011)	<b>Bugs Fixed:</b> <ul style="list-style-type: none"> <li>• Fixed column value editing using Picker Dialog</li> <li>• Fixed minor issues</li> </ul>
v1.7 (June 01, 2011)	<b>New Features:</b> <p>Added default values support</p> <b>Improvements:</b> <ul style="list-style-type: none"> <li>• Added support for new licensing model (ArtfulBits License Manager v1.4)</li> <li>• Added "Save site as template" support</li> </ul>
v1.61 (December 11, 2010)	<b>Improvements:</b> <ul style="list-style-type: none"> <li>• Added Content Type support</li> </ul>
v1.6 (November 16, 2010)	<b>New Features:</b> <ul style="list-style-type: none"> <li>• Added Russian and German localization</li> </ul> <b>Bugs Fixed:</b> <ul style="list-style-type: none"> <li>• Fixed minor issues</li> </ul>
v1.51 (August 11, 2010)	<b>Improvements:</b> <ul style="list-style-type: none"> <li>• Allowed assembly partially trusted callers</li> </ul> <b>Bugs Fixed:</b> <ul style="list-style-type: none"> <li>• Fixed problem with adding new Parent Selector column to list (SharePoint 2010 only)</li> </ul>
v1.5 (August 03, 2010)	<b>New Features:</b> <ul style="list-style-type: none"> <li>• Added Datasheet view support</li> </ul>

v1.43 (July 08, 2010)	<b>Bugs Fixed:</b> <ul style="list-style-type: none"> <li>Fixed lookup to sub folder (column settings page issue)</li> </ul>
v1.42 (June 23, 2010)	<b>Bugs Fixed:</b> <ul style="list-style-type: none"> <li>Fixed "Allow multiple values" property changing issue (from False to True)</li> <li>Fixed error with 6622 Event ID in Event Viewer (Field type Dummy Field has duplicated definition)</li> </ul>
v1.41 (June 11, 2010)	<b>Improvements:</b> <ul style="list-style-type: none"> <li>Improved Setup Wizard</li> </ul> <b>Bugs Fixed:</b> <ul style="list-style-type: none"> <li>Disabled ability of choosing DateTime and Number column as lookup target column for SharePoint 2007</li> </ul>
v1.4 (May 28, 2010)	<b>New Features:</b> <ul style="list-style-type: none"> <li>Added ability to lookup data from subfolder</li> </ul>
v1.3 (May 13, 2010)	<b>New Features:</b> <ul style="list-style-type: none"> <li>Added ability to show additional fields (SharePoint 2010 only)</li> <li>Added relationships behavior: restrict or cascaded deleting (SharePoint 2010 only)</li> </ul> <b>Improvements:</b> <ul style="list-style-type: none"> <li>Added support DateTime and Number columns as target columns</li> <li>Lookup entries sorting during item editing</li> </ul>
v1.2 (April 22, 2010)	<b>New Features:</b> <ul style="list-style-type: none"> <li>SharePoint 2010 support added</li> </ul>
v1.11 (February 01, 2010)	<b>Bugs Fixed:</b> <ul style="list-style-type: none"> <li>Problem with product version (Setup Wizard only)</li> </ul>
v1.11 (January 14, 2010)	<b>Bug Fixed:</b> <ul style="list-style-type: none"> <li>Problem with some SharePoint language packs</li> </ul>
v1.1 (January 12, 2010)	<b>New Features:</b> <ul style="list-style-type: none"> <li>Added <b>Validate Hierarchical Integrity</b> (checking whether hierarchical data is non-cyclic)</li> </ul> <b>Improvements:</b> <ul style="list-style-type: none"> <li>Improved picker dialog (Lookup or Title columns are selected by default)</li> <li>Improved column conversation (is more easy and clearly)</li> <li>Improved Setup Wizard</li> </ul>
v1.0 (November 02, 2009)	<b>Initial Release</b>



## See Also



### [ArtfulBits Blog](#)

Professional Blog complements and extends SharePoint default functionality with the possibility of adding video or zoomable image and preview, providing tags for the blog entries, supporting the categorization and tags cloud, filtering the entries by category or tag, configurable global settings and many more.



### [Cascaded Lookup Column](#)

Cascaded Lookup Column allows building relationship between parent and child columns, the data selected in one field will determine the options presented in another.



### [Category Column](#)

Category Column allows tracking, organizing and grouping list items. Outlook 2007 approach for elements categorization, easy indicator color changing and using of advanced tooltip, provide a high professional component style.



### [Column Data Adapter](#)

Column Data Adapter is an extension component providing ability to use ArtfulBits Columns in Microsoft Access forms, reports and Microsoft Excel.



### [Column Permissions](#)

Column Permissions allows you to manage access to list content on column level. Permissions can be assigned for individual users and for SharePoint groups as well and are effective in forms and list views, as well as in the SharePoint Alerts, RSS, Datasheet and even during exporting to Excel and opening with Access.



### [Discussion Column](#)

Need to organize well formatted conversation in the list item without enabling list versioning? Discussion Column is the right choice. Component allows entering rich text with formatting, images, tables, hyperlinks and other features.



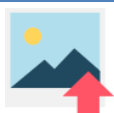
### [Email Web Part](#)

ArtfulBits Email Web Part allows sending e-mail messages directly from Microsoft SharePoint site. You can notify task assigned users, send gratitude or just send regular e-mail message, etc.



### [Follow-Up Column](#)

Follow-Up Column enables due date flags similar to Outlook follow-up functionality. Applying of flags to the list item allows adding of visual reminder in a natural way.



### [Image Upload Column](#)

Quick and simple way of uploading pictures. Image Upload Column provides with ability to select a picture using file browsing dialog, upload and display it in the list view.



---

### [KPI Column](#)

KPI (Key Performance Indicator) Column is simple graphical scorecards that can be used to evaluate business data against business goals. With this column you reduce risk to overlook information about the status of value.



---

### [Link to Document Column](#)

Link to Document Column allows referencing files and folders placed at Document Library and provides easy and intuitive way to download files directly from column. Use this column to provide a browsing interface that allows users to browse to an object to link to instead of typing a URL.



---

### [Parent Selector Column](#)

Parent Selector Column is used for organizing hierarchical relations in SharePoint list. Picker dialog allows choosing data from large lists. Standard Lookup column can be easily converted to Parent Selector column and vice versa.



---

### [Password Change Web Part](#)

Password Change Web Part allows users to change their own passwords from within the SharePoint environment using standard text box interface (current password, new password and confirm new password).



---

### [Password Expiration Web Part](#)

Password Expiration Web Part enables Active Directory users to be notified via Web Part interface that their passwords are about to expire. It also automatically sends out email notifications to users before the password expiration date.



---

### [Professional Calendar Web Part](#)

Professional Calendar Web Part provides following key benefits: it allows combining events from different SharePoint Lists, from any SharePoint Site, in one Calendar view; allows specifying different color sets for different event sources; supports on-the-fly AJAX-enabled editing features in Outlook like style; and other enhanced functionalities.



---

### [Progress Column](#)

Progress Column provides users with the ability to make SharePoint lists more visualized by displaying numerical data on the page using percentage-based progress bar. Professional progress bar style will make your SharePoint list really modern and stylish.



---

### [Shopping Cart Web Part](#)

ArtfulBits Shopping Cart is intended to provide ecommerce functionality. This web part provides a possibility to exhibit items for sale, its basic information, items images, and price, choose the size or other category of item, submit an order and save order in history.



---

### [Video](#)

Video Column and Video Web Part are powerful controls made for uploading, managing, linking and playing video files. These controls support variety of video files that can be uploaded from computer, or linked from SharePoint library or streamed from direct URL.

---

## Remarks

Information in this document may be outdated. Please, visit <https://www.sharepoint-artfulbits.com/> for the latest product version.